

ISAIAH EVANS, et al.,
v.
UNITED STATES PIPE &
FOUNDRY COMPANY, INC., et al.,

CIVIL ACTION NO: 1:05-cv-01017-KOB

AERIAL MAP

FMC/UDLP

PROXIMATE SETTLEMENT ZONE
(CIRCLE REPRESENTS AREA WITHIN ONE
HALF MILE RADIUS FROM CENTER OF
FORMER FMC/UDLP FOUNDRY, BOUNDED TO
THE SOUTH BY HIGHWAY 202)

F FORMER FMC/UDLP FOUNDRY
(33.65437630030, -85.86005987220)

NOTE: Property centroid coordinates in parenthesis

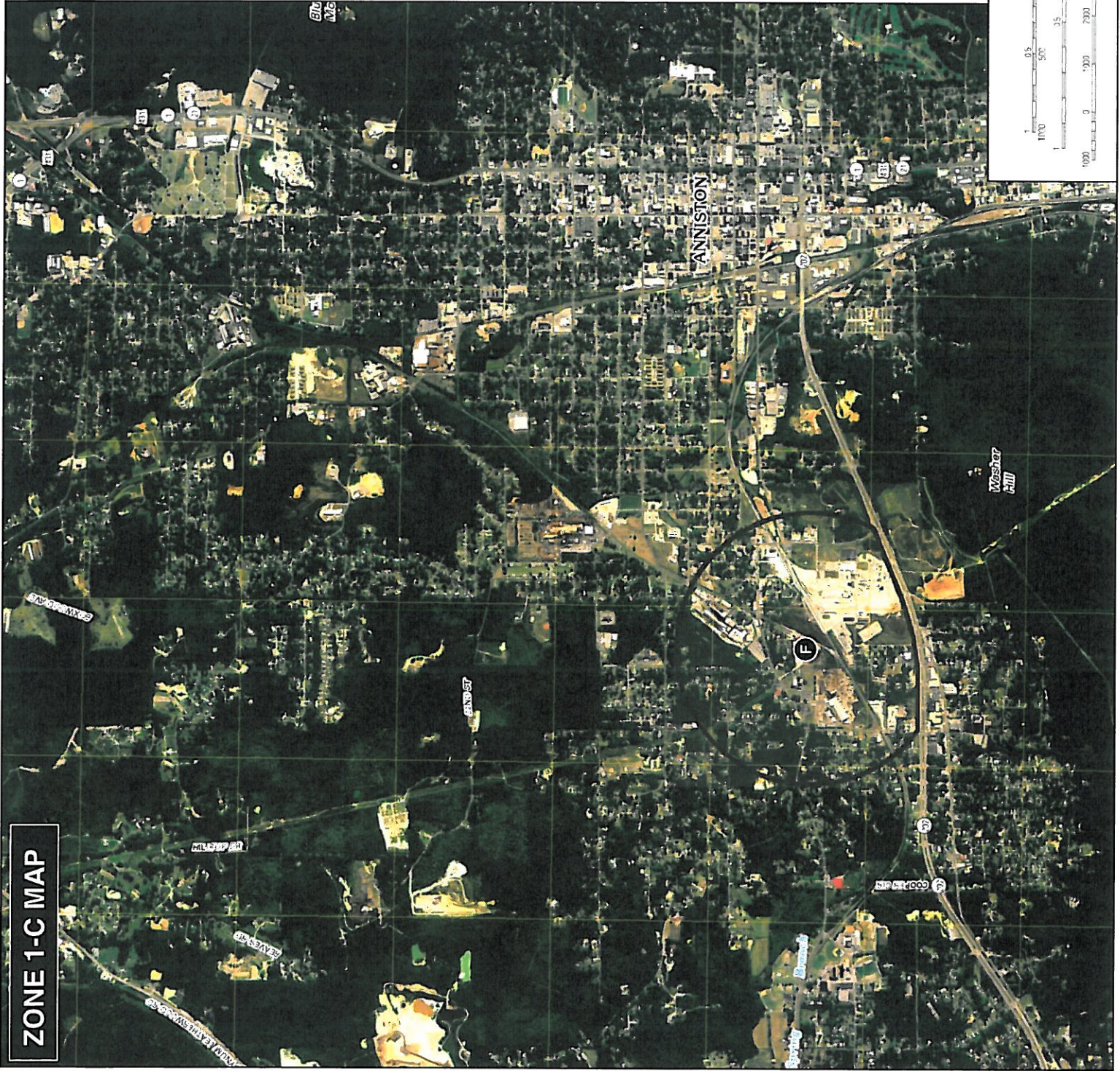


1/2 MILE RADIUS

BASE MAP
USGS ANNISTON QUAD
USGS EULATON QUAD
7.5 MINUTE TOPOGRAPHIC
JUNE 2006 IMAGERY
(Retrieved from
<http://topomaps.usgs.gov/>)

UTM 80R AND 8000 MAGNETIC NORTH
DECLINATION AT CENTER OF SHEET

SCALE 1:24 000



ZONE 1-C MAP