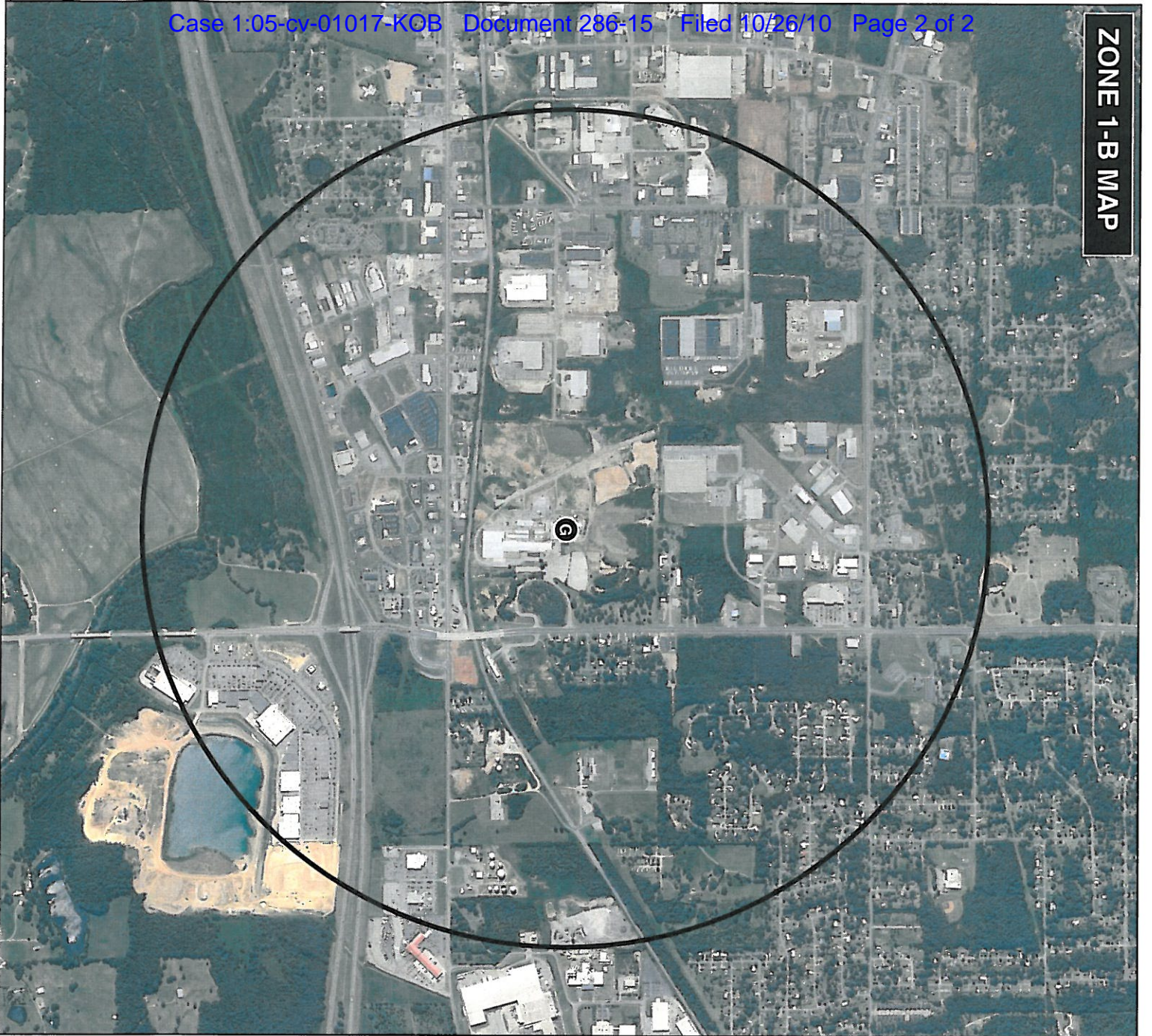


ZONE 1-B MAP



ISAAH EVANS, et al.,
 v.
 UNITED STATES PIPE &
 FOUNDRY COMPANY, INC., et al.,
 CIVIL ACTION NO: 1:05-cv-01017-KOB

AERIAL MAP

**PHELPS DODGE INDUSTRIES
 PROXIMATE SETTLEMENT ZONE
 (CIRCLE REPRESENTS AREA WITHIN ONE MILE
 RADIUS FROM CENTER OF FORMER PHELPS DODGE
 FACILITY)**

**G FORMER PHELPS DODGE FACILITY
 (33.61912209670, -85.79076520060)**

NOTE: Property centroid coordinates in parenthesis



1 MILE RADIUS

**BASE MAP
 1 METER RESOLUTION
 JULY 3, 2009 IMAGERY
 (Retrieved from <http://terraserver.com>)**

