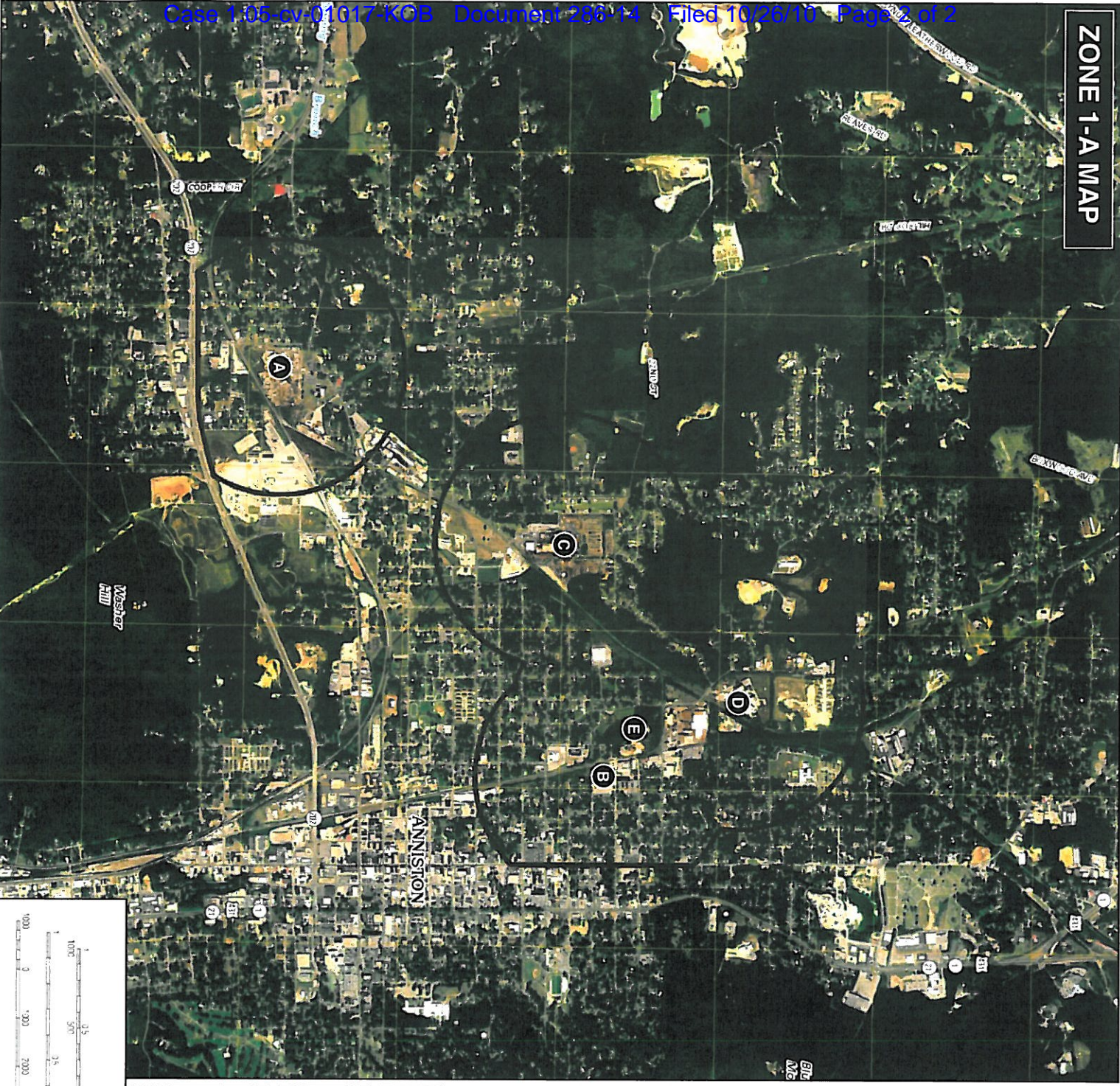


ZONE 1-A MAP



ISAIAH EVANS, et al.,
 v.
 UNITED STATES PIPE &
 FOUNDRY COMPANY, INC., et al.,
 CIVIL ACTION NO: 1:05-cv-01017-KOB

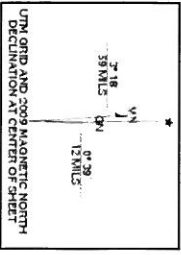
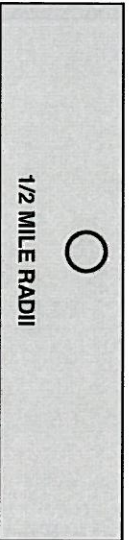
AERIAL MAP

**MW CUSTOM PAPERS, LLC
 PROXIMATE SETTLEMENT ZONE**
 (BLACK LINE DEPICTS OUTER BOUNDARY
 CREATED BY CIRCLES WITH ONE HALF MILE
 RADIUS FROM CENTER OF FORMER MWCP
 FOUNDRIES, BOUNDED TO THE EAST BY
 NOBLE STREET AND TO THE SOUTH BY
 HIGHWAY 202)

MW CUSTOM PAPERS, LLC

- A** FORMER ANNISTON FOUNDRY
 (33.65242087080, -85.86337626880)
- B** FORMER ALABAMA FOUNDRY
 (33.67036026860, -85.83568518300)
- C** FORMER UNION FOUNDRY
 (33.66893601740, -85.85155825240)
- D** FORMER WATER PIPE FOUNDRY
 (33.67893031610, -85.84088578840)
- E** FORMER STANDARD FOUNDRY
 (33.67241079870, -85.83903169010)

NOTE: Property centroid coordinates in parenthesis



BASE MAP
 USGS ANNISTON QUAD
 USGS EULATON QUAD
 7.5 MINUTE TOPOGRAPHIC
 JUNE 2006 IMAGERY
 (Retrieved from
<http://topomaps.usgs.gov/>)

SCALE 1:24 000

